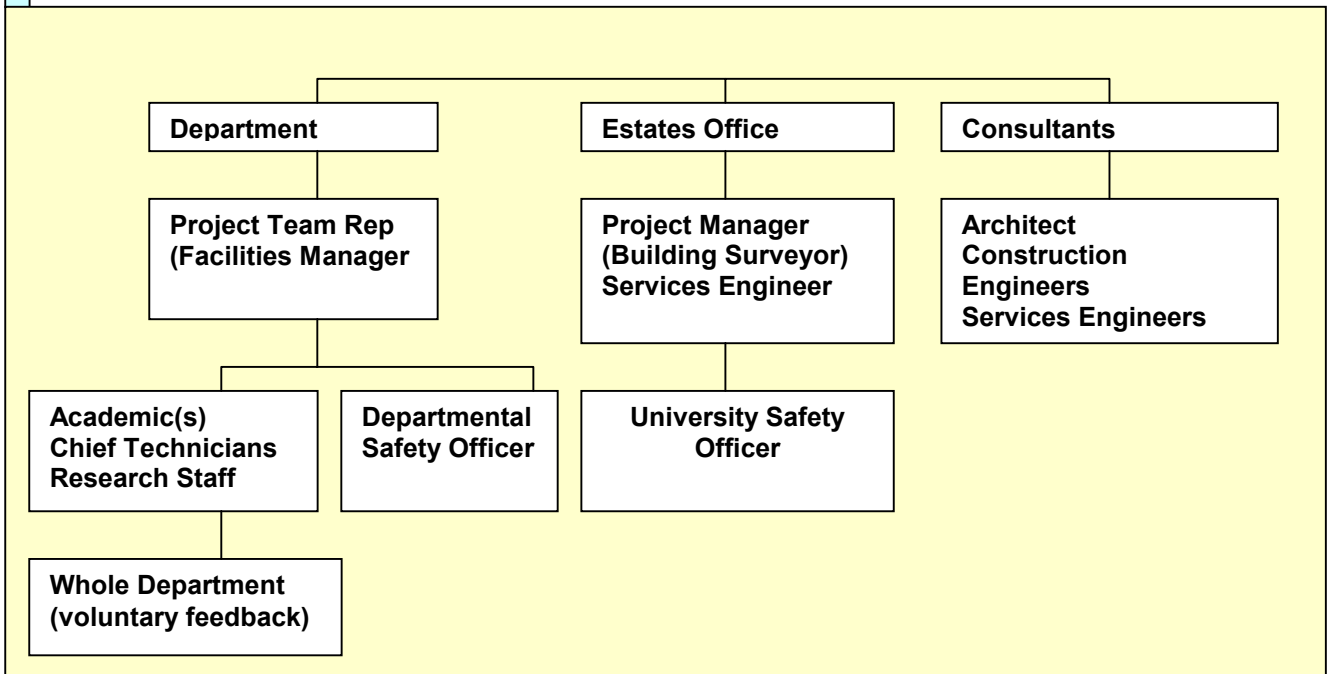


Layout and Space Standards for Biomedical Labs

Design Team



Internal Area Classification

- Usable Area
- Primary Area
- Secondary Area
- Tertiary Area
- Other
- Balance Area

Primary Areas

- **Bench Area**
- Workstation/workplace allocated as 'Base' to individual researchers
- Benching/space (communal) for equipment adjacent to workplace
- **Office/writing spaces** – within the lab and/or outside the lab. eg. for academics, technical, secretarial, computer staff

Secondary Areas

- **Specialist Laboratories**
- EM Suites
- Containment labs
- Tissue Culture labs
- Equipment rooms
- Cold / hot rooms
- Glassware / media prep areas
- Computer (support) rooms

Tertiary Areas

- **Research Support Facilities**
- Administration
- Stores
- Workshops
- Seminar / Meeting rooms
- Library / Common room / Catering

Balance Areas

- Corridors
- Stairs
- Lifts
- Reception
- WC's
- Plant rooms

Space Standards (Average per person)

Primary Areas:		(Ave.sq.M)
Lab Workspace	6-10 sq.m	(8)
Equipment Areas/Writing Space/Offices	4-6 sq.m.	(5)
<u>Total Primary Areas</u>	<u>10-16 sq.m</u>	<u>(13)</u>

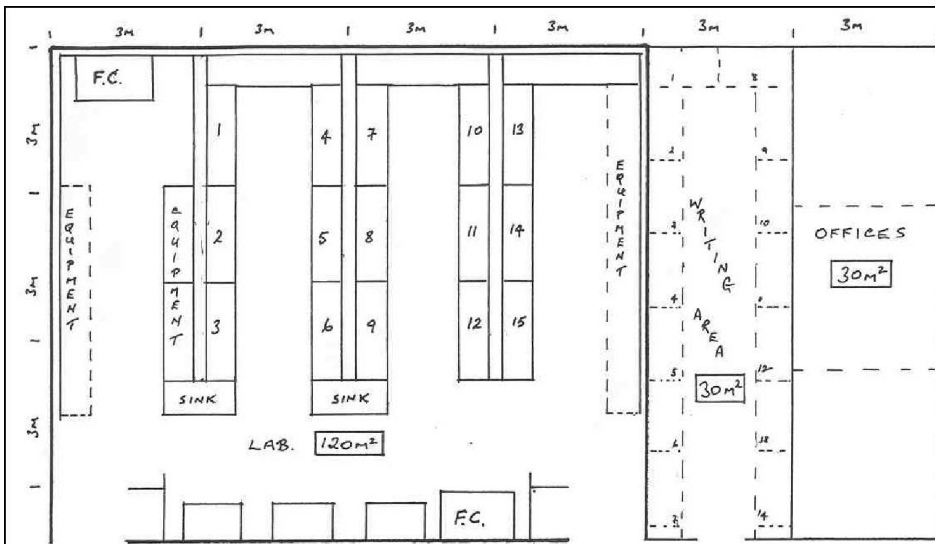
Secondary Areas:		
Specialist Labs/ Rooms	5-9 sq.m.	(7)
<u>Total Primary + Secondary Area</u>	<u>15-25 sq.m</u>	<u>(20)</u>

Tertiary and Balance Areas (excl. Plant Room)	5 sq.m	(5)
--	--------	-----

Gross Internal Area per person (excl. Plant Room)	20-30 sq.m	(25)
--	------------	------

Laboratory Working Space Dimensions

■	Length of bench per researcher	2m
■	Depth of bench	0.6m
■	Width of services upstand (spine)	0.2/0.3m
■	Distance between benches	1.5m
■	Aisles at end of benches	1.2/1.5m
■	Aisles for through traffic	1.8/2m



PRIMARY AREA

$$180\text{m}^2 \div 15 = 12\text{m}^2$$

18m.

WARM ROOM 12m ²	COMPUTERS 15m ²	TISSUE CULTURE 18m ²	DARK ROOM 9m ²
COLD ROOM 12m ²	INCUBATORS 15m ²	MICROSCOPE 12m ²	WASH-UP MEDIA PREP. 15m ²

SECONDARY AREA

$$108\text{m}^2 \div 15 = 7.2\text{m}^2$$